



MISSISSIPPI GEOSPATIAL CONFERENCE
LONG BEACH, MS October 10-11, 2024



Thank you to our Sponsors & Supporters

Diamond Sponsor:



Platinum Sponsor:



Gold Sponsors:



Silver Sponsors:





THURSDAY

October 10, 2024

9:00 REGISTRATION

Session 1

- 10:00 Rally folks to the Conference and Welcome Message from President
David Hansen, President of MAST
- 10:10 Enhancing Workflow Efficiency by Integrating Model Builder and Custom Scripts
Heather Nicholson, GEO Jobe
- 10:30 Catfish Data Solutions with ArcGIS Dashboards
Reid Lambden, The Geospatial Group
- 10:50 Fundamental GIS Data Quality Requirements for NG9-1-1: Going Beyond the Standards
Sandi Stroud, 1Spatial
- 11:10 Building the 3D Hydrography Program (3DHP) for the Upper Pearl HUC8 in Mississippi: A Case Study
Clinton Russell, Jr. and Tracey Foster Milton, Waggoner
- 11:30 Web Scraping and the Wayback Machine: Using Internet Archives and Geoanalytics to Assess National Industry Change
Kayla Stan and Nina Kallaus, USM
- 11:50 Break - Sponsored by Waggoner Engineering and The Geospatial Group

12:00 LUNCH - Sponsored by GEO Jobe and The GEO Project

Session 2

- 1:00 ArcGIS for Microsoft 365
Zena Pelletier, ESRI
- 1:15 ArcGIS Business Analyst: Best Practices Using Artificial Intelligence, Demographic Data, and More
Zena Pelletier, ESRI
- 1:30 ArcGIS Online and ArcGIS Enterprise: An Overview of Smart Mapping
Zena Pelletier, ESRI
- 1:45 An Overview of ArcGIS Workflow Manager
Zena Pelletier, ESRI
- 2:00 Break - Sponsored by Esri

Session 3

- 2:20 A Comparative Machine Learning Approach Integrating UAV and Multispectral Imagery for Classifying Fractional Vegetation Cover in Rangelands
Nishat Shermin, MSU



THURSDAY

October 10, 2024

- 2:40 Mapping the Luminous Intrusion: A Nationwide Emerging Bivariate Cluster Analysis of Nighttime Light's Intervention on Bat Habitats over 30-years
Nafiz Rahaman, MSU
- 3:00 Developing Flood Analysis Applications Using ESRI ArcGIS Solutions
Amelia Adams and Andrew Milanes, ES²
- 3:20 Statewide Imagery Programs: Examining the Pros and Cons of Conventional, (COTS), and Hybrid Approaches
Jeff Lovin, Woolpert
- 3:40 Break - Sponsored by ES² and The University of Southern Mississippi

Session 4 - KEYNOTE

- 4:00 Planting the Seeds to Ensure that GIS has a Future
Joseph Kerski, Esri
- 5:00 President Comments and Dismiss
David Hansen, President of MAST

SOCIAL: 5:30 PM - 7:30 PM - Sponsored by GEO Jobe and The GEO Project

FRIDAY

October 11, 2024

9:30 BREAKFAST - Sponsored by GEO Jobe

Session 5

- 10:30 Integrating GPS Routes and GoPro Footage for Seamless Tracking and Review
Skyler Favors, GEO Jobe
- 10:50 Global Explorer: A GIS Tool for Travelers
William Bradford, GEO Jobe
- 11:10 Don't Quit Your Day Job... Yet: How Large Language Models Can Help You, Not Replace You
Clayton Cooley, Cooperative Energy
- 11:30 GIS Council State of the State
Steve Gray, Chair of the GIS Council
- 11:50 Awards Presentation, Door Prizes, and Dismissal
- 12:00 Board Meeting

Joseph Kerski

Joseph Kerski is a geographer with a focus on the use of Geographic Information Systems (GIS) in education. He has served as the President of the National Council for Geographic Education and has given 2 TED Talks on "The Whys of Where". He holds 3 degrees in geography (BA, MA, PhD) and has served as a geographer in 4 major sectors of society, including government (NOAA, US Census Bureau, USGS), academia (University of Minnesota, Harrisburg Area Community College, Penn State University, Sinte Gleska University, University of Denver, others), private industry (as Education Manager for Esri), and nonprofit organizations (with roles in geography and education associations). Joseph has authored over 100 chapters and articles, and 200 podcasts on GIS, education, space, place, and related topics. He has visited over 350 schools and 400 universities around the world. He regularly conducts professional development for educators. He has created over 6,200 videos, 1,000 lessons, 1,000 blog essays, and authored 12 books, including *Interpreting Our World*, *Spatial Thinking in Environmental Contexts*, *Essentials of the Environment*, *Spatial Mathematics*, *Tribal GIS*, *International Perspectives on Teaching and Learning*, the *GIS Guide to Public Domain Data*, and others. But as a lifelong learner, he feels as though he's just getting started and thus actively seeks mentors, partners, and collaborators.



The Mississippi Geospatial Conference

is presented to you by the

Mississippi Association for Spatial Technologies



The Mississippi Association for Spatial Technologies (MAST), is the largest organization of geospatial professionals in our region. Our organization supports professional growth, best practice geospatial standards, and geospatial education. MAST meets the second Friday bi-monthly. Please visit mastgis.org for more information and join us on facebook.com/groups/MASTGIS

The **Mike Miller Memorial Scholarship** is awarded to the winners of the poster contest at the annual Mississippi Geospatial Conference. This scholarship is awarded in honor of founding MAST board member, and life time achievement awardee, Mike Miller.

2023 MAST Board of Directors

David Hansen, President
Scott Trapolino, Vice President
Courtney Menikheim, Secretary
Paul Barnes, Treasurer
Karen Clark
Dr. David Holt
Jim Steil
Haley Feather
Heather Nicholson, Ph.D.

Elections for MAST Board Positions

Use the QR Code to vote for
President, Vice President, and Board of MAST

Secretary and Treasurer will be elected in 2025

Voting will close at 10:30 AM on Friday
Results will be announced
during the closing session.





geo jobe

Celebrating 25 Years of Service in the Geospatial Industry

Our ABCs of GIS is a suite of ArcGIS applications and solutions designed to increase efficiency and fuel better decisions for your organization.



admin**tools**

Manage items, users, and groups in bulk, minimize workloads, and maximize efficiency with our premier suite of tools for Administrators.



backup my **org**

Create backups and restore your entire organization or specific items to the original environment or a new environment.



clean my **org**

Scan items, users, and groups for inefficiencies, security concerns, and other issues to keep your organization running smoothly.



Scheduler for **ArcGIS**

Construct code-free workflows, run tasks on schedule or in real-time, and automate actions based on real-time events or triggers within your ArcGIS System.

Custom Services Designed to Make Your Job Easier



Our 24/7 U.S.-based Support Technicians are Esri-trained and experienced with large and small clients globally, providing secure, skilled, and trusted GIS and IT support.



We offer a range of services to facilitate a smooth implementation of geospatial tech, including managed services, on-call GIS support, and deployment of industry standard solutions.



Utilize our licensed UAV team for mapping and data collection with a range of options, including orthophotography, volumetric studies, 3D modeling, ML/deep learning, and more.



Our team of geospatial software development experts are ready to make your web or mobile app dreams a reality—at an affordable price.



THE GEOSPATIAL GROUP

A Mississippi Company

31
YEARS



The Geospatial Group
701 Avignon Dr. Suite 101
Ridgeland, MS 39157
Phone: 888-517-7849
info@thegeospatialgroup.com



We do more than plan and design infrastructure. We transform communities.

Geospatial & Asset Management

Waggoner understands geospatial data and how each of our clients relies on its availability and accuracy, whether governments that provide and maintain public infrastructure and services or businesses and industries that feed the economy and produce goods and services for public consumption.

We provide geospatial and asset management services to state and local governments and private sector entities. We also make it a point to integrate geospatial services and technology throughout our other design and construction disciplines to aid in project delivery and add value to the ultimate product our client receives.



esri

Partner Network
Bronze

Our Services

We offer integrative solutions delivered through a broad array of disciplines.

- Coastal Restoration
- Water & Wastewater
- Watershed Planning
- Hydraulics/Hydrology
- Operations & Maintenance
- Civil Engineering
- **Geospatial & Asset Management**
- Construction Management
- Planning & Development
- Broadband Design & Network Implementation
- Utilities
- Transportation
- Surveying & Mapping
- Strategic Services



waggonereng.com

GIS

- Desktop GIS
- Web GIS
- Enterprise GIS
- Geodatabase



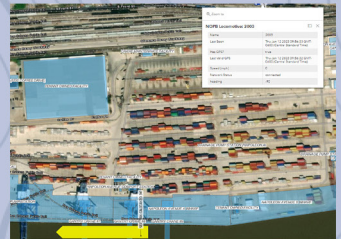
UAS

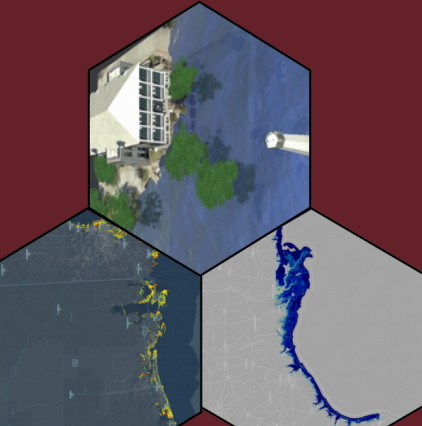
- Image Acquisition
- Data Processing
- Analysis
- LiDAR



Surveying

- Topographic/Profiles
- Construction Layout
- As-Built
- Boundary





THE GEO PROJECT

Our mission is to enhance geospatial capacity in coastal and tribal communities through targeted education, outreach, and research initiatives. By equipping these communities with essential geospatial tools and knowledge, we empower them to make informed decisions for sustainable coastal and tribal land management and resilience.



MISSISSIPPI STATE UNIVERSITY[™]
GEOSPATIAL EDUCATION
& OUTREACH PROJECT





**Southern Miss is proud to
be an economic driver and
community partner across
the Mississippi Gulf Coast!**

